

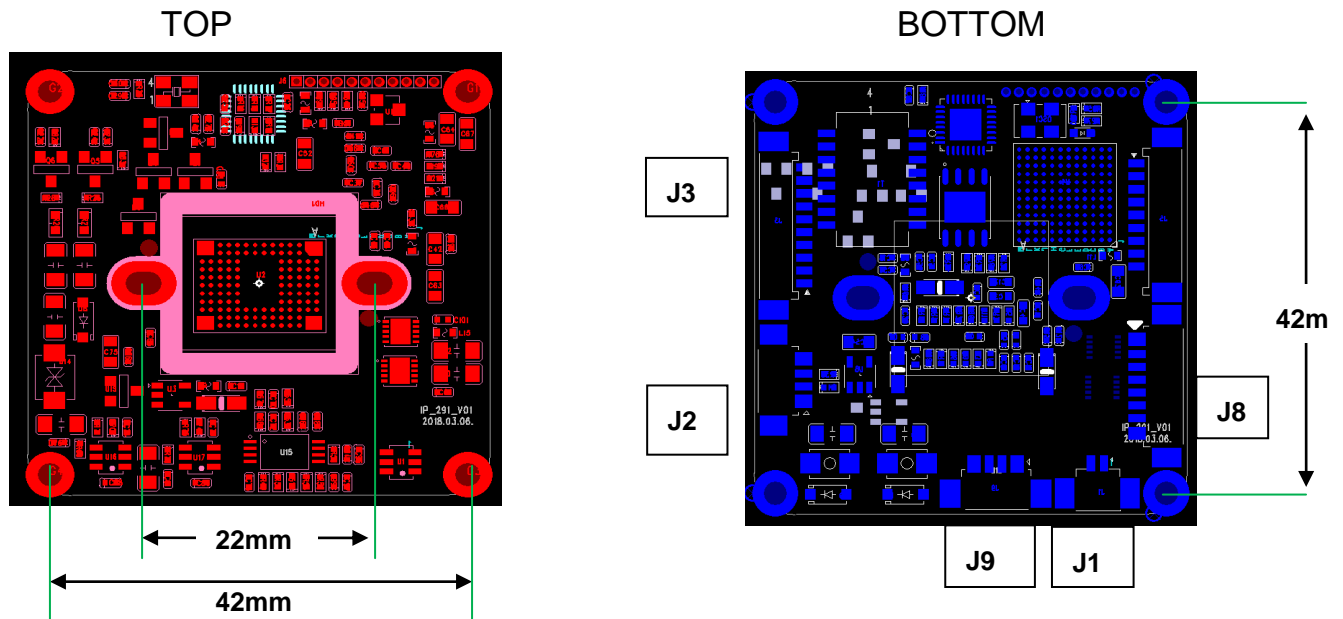
SPECIFICATIONS

FULL HD NETWORK CAMERA MODULE

(IMX291 IP module)

NEOCOM CO., LTD.

1. MODULE DIMENSION



3. CONNECTOR SPECIFICATIONS

J9 : IRIS		Yeonho, P/N : 12504WS-04	
Pin No.	Pin Name	Description	
1	DMP+	IRIS DMP+	
2	DMP-	IRIS DMP-	
3	DRV+	IRIS DRV+	
4	DRV-	IRIS DRV-	

J3 : Power & Network		Yeonho, P/N : 12510WS-10	
Pin No.	Pin Name	Description	
1	ETH TXP	LAN SIGNAL	
2	NC ETH TXM	LAN SIGNAL(PoE)	
3	ETH TXM	LAN SIGNAL	
4	ETH RXP	LAN SIGNAL	
5	NC ETH RXM	LAN SIGNAL(PoE)	
6	ETH RXM	LAN SIGNAL	
7	LINK LED	LAN LINK INDICATOR	
8	SPEED LED	LAN SPEED INDICATOR	
9	GND	GND	
10	POWER (DC 12V)	POWER INPUT	

J1 : DAY & NIGHT		Yeonho, P/N : 12505WS-02	
Pin No.	Pin Name	Description	
1	Motor -	Day Mode : Active	
2	Motor +	High Night Mode : Active Low	

J2 : IR_LED		Yeonho, P/N : 12504WS-04	
Pin No.	Pin Name	Description	
1	IR SENOR SET	IRLED ON(low led on)	
2	IR SENOR INPUT	DAY/NIGHT SELECT FROM IR BOARD(cds in)	
3	GND	GND	
4	DC +12V	DC +12V Power output	

J8 : TWO MOTER		Yeonho, P/N : 12508WS-08
Pin No.	Pin Name	Description
1	FA -	TWO MOTER
2	FA +	TWO MOTER
3	ZA -	TWO MOTER
4	ZA +	TWO MOTER
5	ZB +	TWO MOTER
6	ZB -	TWO MOTER
7	FB -	TWO MOTER
8	FB +	TWO MOTER

Specifications

Image Device	1/2.8" SONY(IMX291) 2M CMOS
Total Pixels	1945(H) x 1109(V) approx
Effective Pixels	1936(H) x 1096(V) approx
Scanning System	Progressive
Resolution	1920x1080, 1280x720, 800x600, 704x480, 640x480
White Balance	Auto
Shutter Speed	Auto
Video Adjustment	WDNR, ContrastLens Shading, ACE, Brightness, Sharpness, Color Saturation, Gamma, IR Anti-Saturation, Defog
Sync. System	Internal
Video Encoding	H.264 Dual or H.264/MJPEG (simultaneous dual stream)
	H.264/(true H.264 streaming)
	Simultaneous streaming with independent control
Resolution	Primary H.264: (Up to max 30fps) 1920x1080, 1280x720, 800x600, 640x480 (Up to max 60fps) 1280x720, 800x600, 704x480, 640x460 Secondary H.264: (Up to max 30fps) 640x480, 640x360, 320x240 Secondary MJPEG: (Up to max 10fps) 1920x1080 Only
Live Casting	Streaming video channels with full duplex live
	Up to max 30fps@ 2M or Up to max 60fps@ 1M
Video Management	H/W 4 motion Detection, 8 Privacy Masking
Bandwidth Management	Frame rate control / Bandwidth control / CBR / VBR
Security	Channel based user password protection for live-cast
Web interface	Live-cast, playback & search through Web browser
	Minimum PC requirement - Windows XP Pro (IE 6.x or later) , Pentium4 (2Ghz, 2G RAM), Video Card(256MB RAM, 1024x768)
System Integration	[Protocol] HTTP, RTP/RTSP, TCP/IP,ARP, DHCP, NTP, SMTP , uPNP, ICMP
Installation & maintenance	Configuration by installation s/w, HTTP
	Upgrade firmware through HTTP, IP Installer
Client Software	Built-In Web, ONVIF Compatible 3rd Party VMS
Misc.	Transmit serial input data with video
	Quick Time & VLC media player compatible
System hardware	32bit Embedded CPU / Embedded RTOS / 64MByte SRAM / 16MByte Serial Flash
Operating Temp. /Storage Temp.	-10°C~+50°C(14°F~122°F) / -20°C~+60°C(-4°F~140°F)
Power Consumption	DC12V±2V, Max. 1.0W